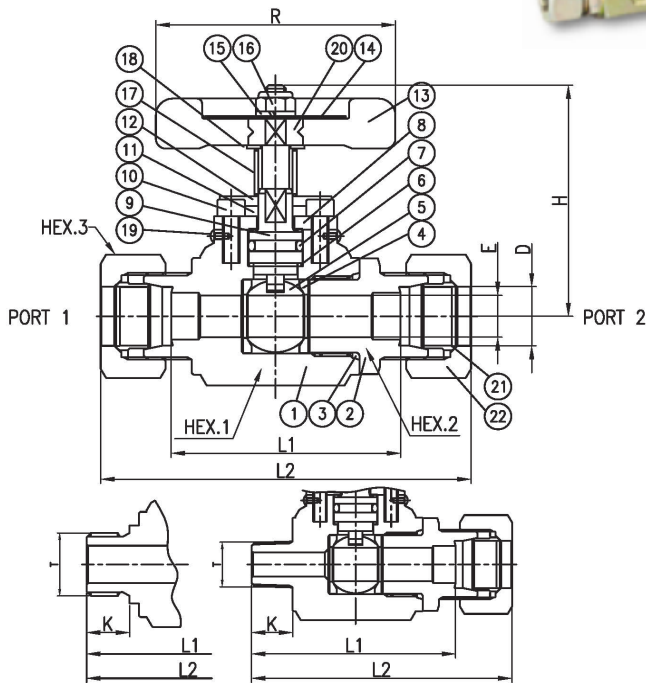


Wheel Type Ball Valve - VBW Series

VBW

Locking Device Type Wheel Ball Valve



No.	Part Name	Material Spec.	
1	Body	S20C	SUS 304
2	Connector	S45C	SUS 304
3	O-Ring	VITON	VITON
4	Seat	PTFE+Glass15%	
5	Ball	SUS 304	SUS 304
6	Stem Packing	PTFE+	PTFE
7	Stem O-Ring	VITON	VITON
8	Flange	S20C	SUS 304
9	Stem	SUS 304	SUS 304
10	Wrench Plug	SUS 304	SUS 304
11	Stopper	S20C	S20C
12	Locking Plate	S20C	S20C
13	Wheel Handle	Nylon + Glass	
14	Name Plate	C2801P	C2801P
15	Spring Washer	SUS 304	SUS 304
16	Nylon Nut	SUS 304	SUS 304
17	Spring	SWP-A	SUS 304
18	Washer	SUS 304	SUS 304
19	Rivet	SUS 304	SUS 304
20	Handle Insert	C3604	C3604
21	Sleeve	STEEL	SUS 304
22	Nut	S45C	SUS 304

■ REFERENCE DIMENSIONS

Unit : mm

PART No.	End Connection		Orifice	D	E	L1	L2	H	R	K	T	HEX.1	HEX.2	HEX.3
	Port 1	Port 2												
VBW-B-10-C	10	10	13	10	8	65	103.0	69.2	70	-	-	36	30	19
VBW-B-12-C	12	12	13	12	10	65	103.0	69.2	70	-	-	36	30	22
VBW-B-15-C	15	15	13	15	12	67	107.0	69.2	70	-	-	36	30	27
VBW-B-16-C	16	16	13	16	12.5	67	107.0	69.2	70	-	-	36	30	30
VBW-B-18-C	18	18	13	18	12.5	67	108.0	69.2	70	-	-	36	30	32
VBW-B-20-C	20	20	17	20	16	79	121.0	72.2	70	-	-	41	36	36
VBW-B-22-C	22	22	17	22	17	78	122.0	72.2	70	-	-	41	36	36
VBW-B-25-C	25	25	20	25	20	84	131.3	75.7	70	-	-	46	41	41
VBW-MB-06R25-C	3/4"PT	25	20	25	20	93	116.6	75.7	70	20	3/4"PT	46	41	41
VBW-MB-08R25-C	1"PT	25	20	25	20	95	118.6	75.7	70	22	1"PT	46	41	41
VBW-B-28-	28	28	20	28	20	84	132.4	75.7	70	-	-	46	41	46
VBW-B-8A-C	13.8	13.8	13	13.8	10.0	67	106.0	69.2	70	-	-	36	30	24
VBW-B-10A-C	17.3	17.3	13	17.3	12.5	67	108.0	69.2	70	-	-	36	30	32

Wheel Type Ball Valve - VBW Series

■ REFERENCE DIMENSIONS

Unit :mm

PART No.	End Connection		Orifice	D	E	L1	L2	H	R	K	T	HEX.1	HEX.2	HEX.3
	Port 1	Port 2												
VBW-MB-03R10A-C	3/8"PT	17.3	13	17.3	12.5	82.5	95.2	69.2	70	15	3/8"PT	36	30	32
VBW-FB-04R10A-C	1/2"PT	17.3	13	17.3	12.5	82	94.7	69.2	70	15	1/2"PT	36	30	32
VBW-MB-04G10A-C	1/2"PF	17.3	13	17.3	12.5	67	108.3	69.2	70	14	1/2"PF	36	30	32
VBW-B-15A-C	21.7	21.7	17	21.7	17.0	78.0	121.7	72.2	70	-	-	41	36	36
VBW-B-20A-C	27.2	27.2	20	27.2	20.0	84.0	132.0	75.7	70	-	-	46	41	46
VBW-B-25A-C	34.0	34.0	20	34.0	20.0	104.0	139.0	75.7	70	-	-	46	46	55
VBW-B-20A-	27.2	27.2	20	27.2	20.0	84.0	132.0	75.7	70	-	-	46	41	46
VBW-B-25A-	34.0	34.0	20	34.0	20.0	104.0	139.0	75.7	70	-	-	46	46	55

■ Specification

- Nominal Pressure : 40 kgf/Cm2
- Test Pressure Body : 80 kgf/Cm2
- Maximum Working Temperature : 160°C
- Application sytem : Fuel Oil, Lub Oil, Fresh Water, Steam

■ Ordering Information

Example :

VBW - B - 10 - C
 ① ② ③ ④

① : Valve Series

② : End Connection B: Bite Type / BM: Bite * Male Thread / FB: Female Thread*Bite Type / F: Female

③ : Size

* ISO/BSP

Thread	1/8"	1/4"	3/8"	1/2"	3/4"	1"
Designator	01R (G)	02R (G)	03R (G)	04R (G)	06R (G)	08R (G)

*Tube

Inch Pipe (JIS)	1/8"	1/4"	3/8"	1/2"	3/4"	1"
Designator	6A	8A	10A	15A	20A	25A
Metric Tube	6	8	10	12	15	20
Designator	06	08	10	12	15	20

④ : Material

C : Carbon Steel B : Brass S4 : Stainless Steel 304